



WEB-BASED INCIDENTAL EMPLOYEE TRANSACTION SYSTEM (CASE STUDY: PT. MURAMOTO ELEKTRONIKA INDONESIA)

Iwan Agustiana¹, Fajar Masya²

Department of Informations System, Faculty of Computer Science, Universitas Mercubuana

¹41814320009@student.mercubuana.ac.id; ²fmasya@mercubuana.ac.id

Abstract: Companies engaged in electronics and automotive manufacturing require a large budget and workforce. Given these conditions, companies are required to optimize the budget and make accurate financial calculations. One of them is funds that are not routinely issued such as budgets and allowances for employees which are one of the obligations that must be issued by the company. Currently the company manages the payment of budgetary funds and employee benefits which are only certain times such as outside official funds, various employee wages, eyeglass funds, sympathy funds and corporate loans which still have no special system to handle this, therefore will be analyzed and designed (web-based incidental employee transaction system) where the system aims to perform automatic and accurate calculations and facilitate workers in the HRD section in managing employee insidental fund payment transactions effectively and efficiently. The method used in developing this system is the waterfall method. The system is made web-based using the PHP programming language, MySQL database and framework bootstrap. The system created can also produce output in the form of payment reports that can be used as proof of submission of payments.

Keywords: Systems, Transactions, Incidentals, Employees

I. INTRODUCTION

The rapid development of information technology has brought significant changes. Progress in the field of computers, both at the world level and in Indonesia which has resulted in users who use technology inevitably have to quickly adapt to the increasingly sophisticated technological developments. Along with and in line with the development of globalization, the information obtained also runs rapidly along with the speed and effectiveness of processing and sending data. Processing data into information on a company can be done with an information system.

The success of a company is largely determined by the profit or income of the company itself. With the changes in time to the position of the company's financial assets, budget control is very important for data collection of financial statements.

One of them is the budget and employee benefits where each company has its own policies related to benefits and the budget given to employees. Just like salaries, employee benefits and budgets should also be discussed in the contract of employment agreement. Although what is obtained in each company varies, but basically employee benefits and budgets are also a company's obligation to employees who are also regulated in the labor law. So that it becomes one of the mandatory obligations that must be paid by the company.

To be able to overcome this problem the company needs to have special policies in handling employee budgets and benefits where only occur or is done on certain occasions or times, including employee official funds, various employee wages, besati sympathies, eye glasses and company loans, which aim to keep the company's finances or budgets from excessive, which in turn will cause one of the things that disrupts the company's finances.

Formulation of the Problem

Based on the background of the problem described, a problem can be formulated as follows:

1. How is the incidental web-based employee transaction system at PT. Muramoto Elektronika Indonesia is able to store employee data and store bill payment transaction data?
2. How can the system help employees of the Human Resource Department (HRD) in calculating billing transactions according to the budget and benefits that have been determined by the company?
3. How can the system produce payment reports as proof of payment?

II. RESEARCH METHODOLOGY

Data Collection Technique

Data collection techniques carried out in the Preparation of this Final Project are as follows:

- A. Library
Library Research is a method of collecting data by reading and studying articles, scientific works, scientific journals or other sources related to the theme chosen for research material.
- B. Direct Observation
Observation is a method of collecting data through observations directly in the field.
- C. Interview
Interview is a method that uses the question and answer process directly and systematically by asking a number of questions to the speaker.

Waterfall method

According to Rosa U.S. and Shalahudin (2014: 28) in his book entitled "The waterfall method is often also called the classic life cycle. The waterfall model provides a sequential flow path approach ranging from needs analysis, design and software systems, implementation, system integration and testing, and maintenance".

The research method applied in this study is the development of the waterfall method. Waterfall method is a systematic and sequential model of information system development Waterfall Method has the following stages:

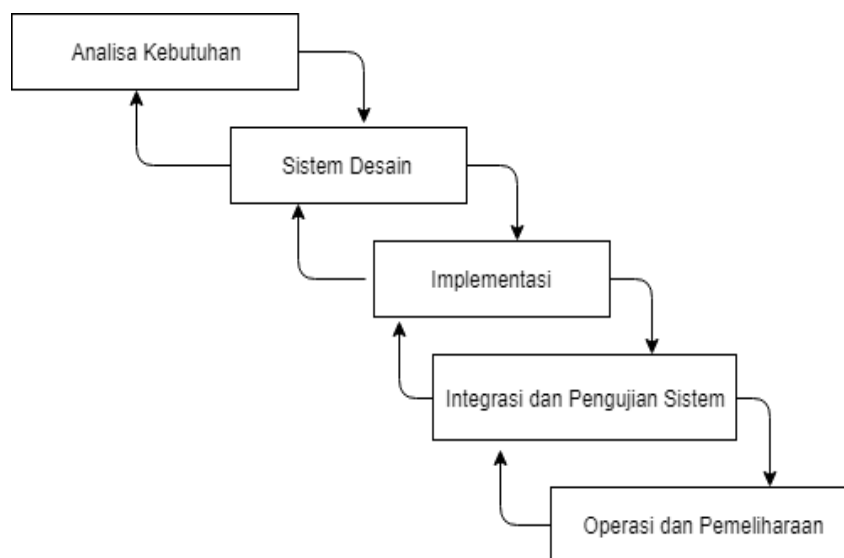


Figure 1 Waterfall Method Diagram

III. RESULTS AND DISCUSSION

Use Case Diagram Proposed System

From the results of the analysis of the problems that have been explained, we try to propose the design and development of information systems based on the diagrams that we present with the use case diagram, activity diagrams, class diagrams as follows:

Use Case

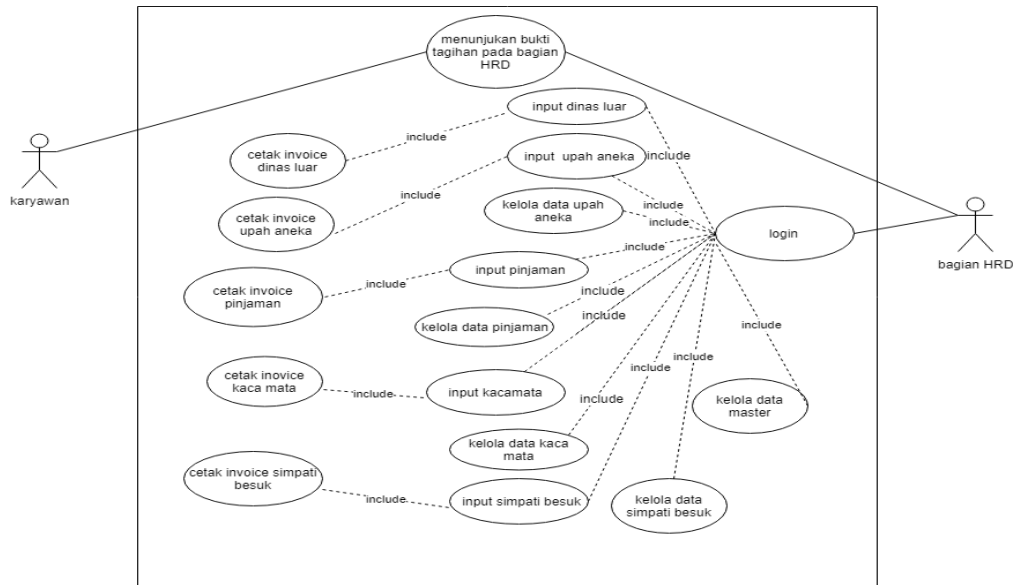


Figure 2 Use Case Diagram Proposed System

Activity Diagram

A. Activity Diagram External Print and Payment Lapors print

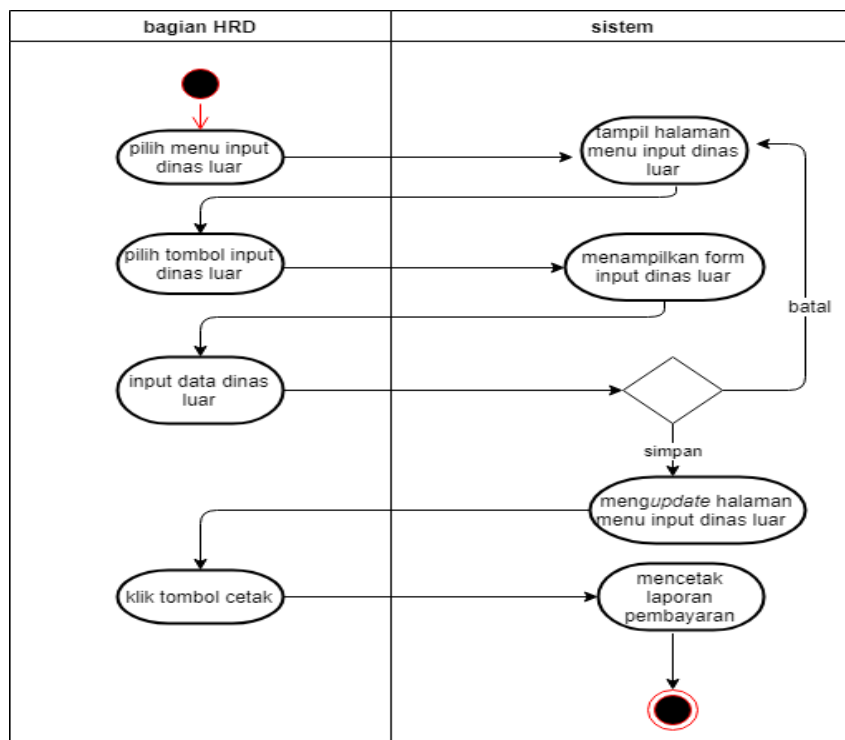


Figure 3 Activity Diagram Print and Payment Lapors Print

The following is an explanation of Activity Diagram External Print and Payment Lapors print: where the HRD section first selects the outside service input menu and the system will display the external service input menu page, then the HRD section selects the outside service input button and the system displays the external service input form and the HRD section input official data if you have selected save or cancel if you select save the system will update the data on the external service menu page, and if the HR department wants to print the report, the HRD section selects the print button and the payment report will print.

B. Activity Diagram Various Wage Inputs and Print Payment Reports

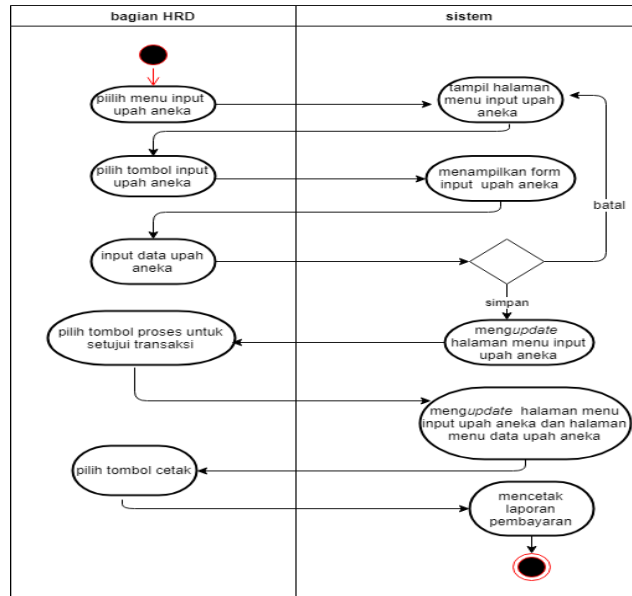


Figure 4 Activity Diagram Various Wage Inputs and Print Payment Reports

The following is an explanation of Activity Diagram Various Wage Inputs and Print Payment Reports: where the HRD section first selects various wage input menus then the system will display various wage input menu pages, then the HRD section selects various wage input buttons then the system will display various wage input forms and the HRD section input various wage data if it has been selected save or cancel if select save system will update the data page of the various wages menu, then the HRD section selects the process button to approve various wage data transactions and the system will update the various wage input menu pages and various wage data menu pages, and if the HR department wants to print the report, HRD section choose the print button and the payment report will print.

C. Activity Diagram Eyewear and Print Eyewear Payment Reports

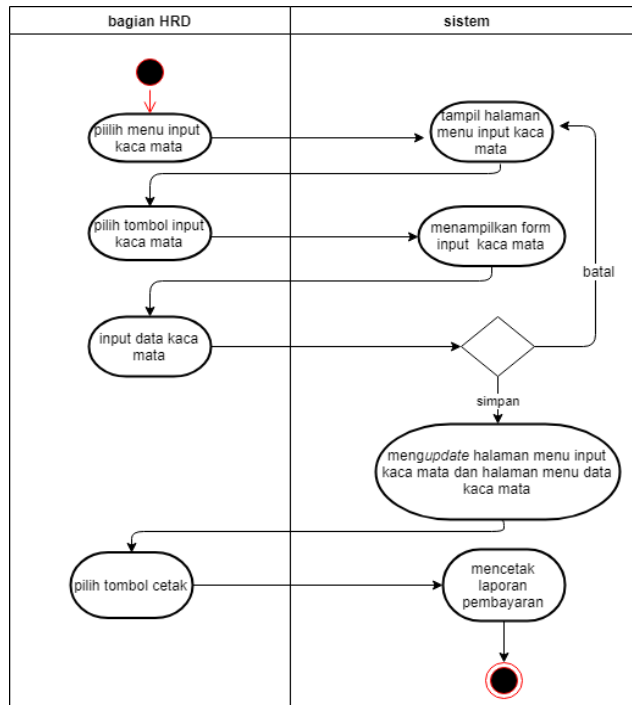


Figure 5 Activity Diagram Eyewear and Print Eyewear Reports

The following is an explanation of Activity Diagram *Eyewear and Print Eyewear Payment Reports*: where the HRD section first selects the eye glass input menu and the system will display the eye glass input menu page, then the HRD section selects the eye glass input button and the system will display the eye glass input form and the HRD part input the glass data if it has been selected save or cancel if select save system will update the data page of the glass eye input menu and the glasses data menu page, and if the HR department wants to print the report, the HRD section selects the print button and the payment report will print.

D. *Activity Diagram* Input Simpati Besuk dan Cetak Laporan Pembayaran Simpati Besuk

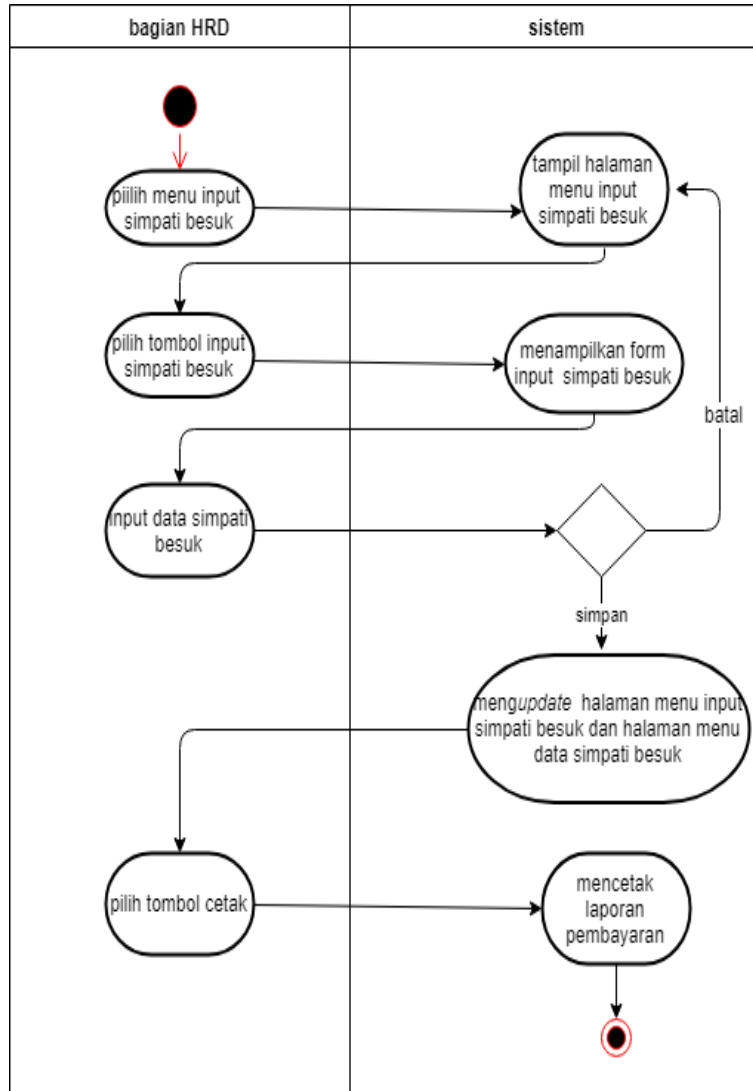


Figure 6 Activity Diagram Input Simpati Besuk and Cetak Laporan Pembayaran Simpati Besuk

The following is an explanation of Activity Diagram input simpati besuk and cetak laporan pembayaran simpati besuk: where the HRD section first selects the menu of the sympathy input then the system will display the menu for the sympathy input menu, then the HRD section selects the sympathy button then the system will display the sympathy input and the HRD section input sympathy if it has been saved or canceled if select save system will update the data on the menu of the sympathy input menu and the sympathy data menu page, and if the HR department wants to print the report, the HRD section selects the print button and the payment report will print.

Class diagram

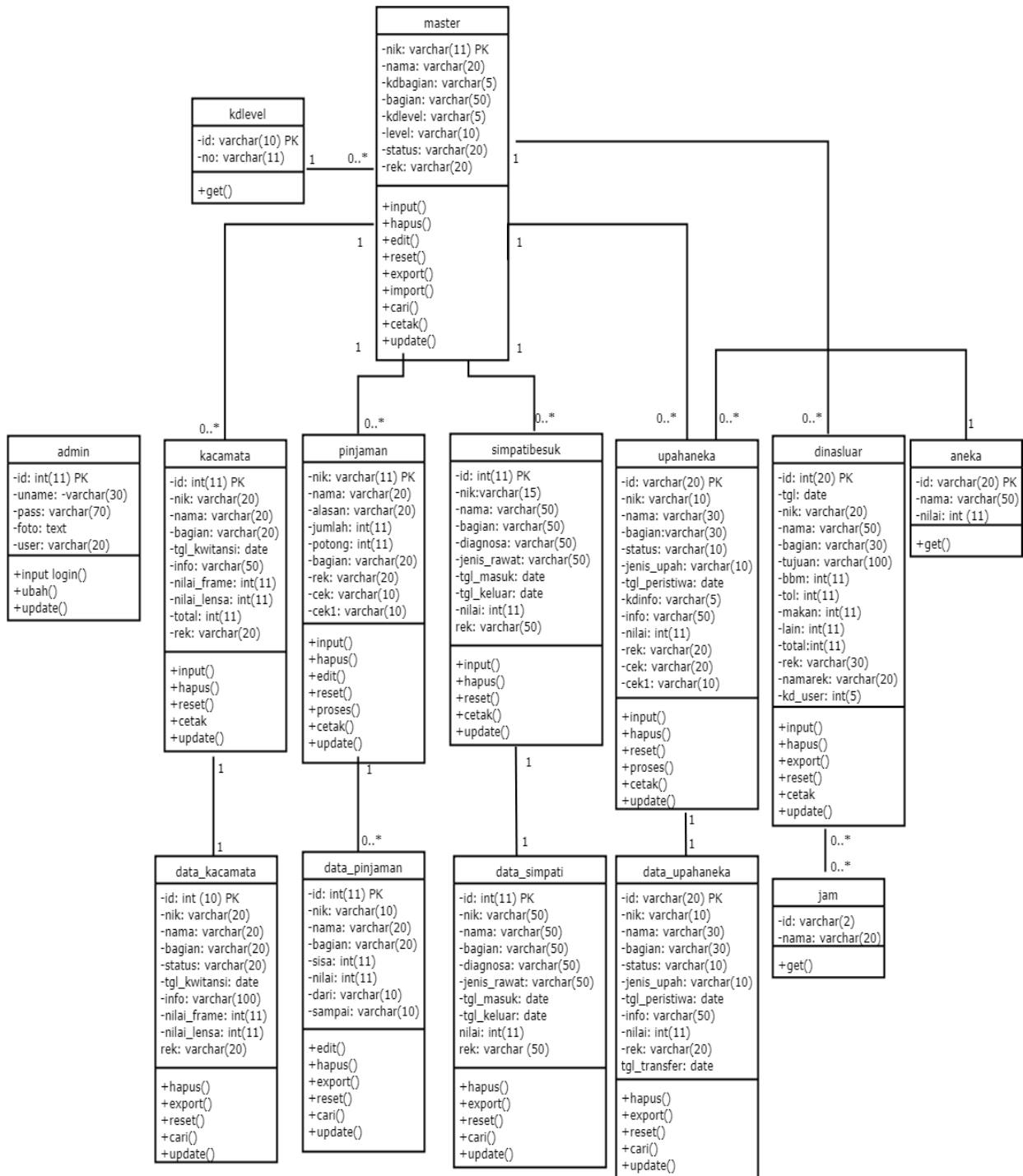


Figure 7 Class Diagram

Application

The following are some of the results of the proposed application implementation:

Dinas Luar

Jumlah Record: 4
Jumlah Halaman: 1

No	Tgl	NIK	Nama	Tujuan	BBM	Tol	Makan	Lain	Total	Rek	Opsi
1	2018-03-10	0080498	sudarno	bekasi	0,-	Rp.31,-	Rp.80.400,-	Rp.100.000,-	Rp.180.431,-	2880100078181	[Edit] [Hapus]
2	2018-10-31	0070498	riwan damanto	bekasi	0,-	Rp.100.000,-	Rp.241.800,-	Rp.8.000,-	Rp.350.800,-	1880001287020	[Edit] [Hapus]
3	2018-10-31	0140498	haryadi	bekasi	80.000,-	Rp.80.000,-	Rp.30.200,-	Rp.8.000,-	Rp.138.200,-	28801007788188	[Edit] [Hapus]
4	2018-10-31	0140498	haryadi	bekasi	100.000,-	Rp.200.000,-	Rp.30.200,-	Rp.8.000,-	Rp.238.200,-	28801007788185	[Edit] [Hapus]
Total Transaksi									Rp. 888.431,-		[Proses]

Figure 8 Menu Service Input Display

Data Pinjaman

Jumlah Record: 382
Jumlah Halaman: 38
Total Potongan: Rp. 101.237.500,-

Cari nama di sini...

No	NIK	Nama	Bagian	Sisa	Amount	Dari	Sampai	Opsi
1	20380008	RANGGA	STAFF RESIN SC PLANT	1	Rp.282.500,-	08-20-18	09-20-18	[Edit] [Hapus]
2	11980001	TOTO SURYANTO	SIA F-4B	2	Rp.282.500,-	-	-	[Edit] [Hapus]
3	3741298	SURATMAN	R.INU F3B	1	Rp.282.500,-	-	-	[Edit] [Hapus]
4	23181204	SUPRIYATI	R.INU F3	1	Rp.282.500,-	-	-	[Edit] [Hapus]
5	80701213	IMAN ARIF AHMADI	SMLETHONPY B	1	Rp.282.500,-	-	-	[Edit] [Hapus]
6	20380404	DODI JUNAEDI	ACC FINANCE	1	Rp.282.500,-	-	-	[Edit] [Hapus]
7	20070074	MURDIN	INSP. A	1	Rp.282.500,-	-	-	[Edit] [Hapus]
8	18321002	AHMAD SUGIANTO	MAINETH F-4B	1	Rp.282.500,-	-	-	[Edit] [Hapus]
9	17180003	ENDANG SAPUDIN	SIA DRTRIMA	1	Rp.282.500,-	-	-	[Edit] [Hapus]
10	16550003	ANDIKA BUDIYANTO	R.INU F3B	1	Rp.282.500,-	-	-	[Edit] [Hapus]

1 2 3 4 5 6 7 8 9 10 11 12 13 14 15 16 17 18 19 20 21 22 23 24 25 26 27 28 29 30 31 32 33 34 35 36

Figure 9 Menu Loan Data Display

Upah Aneka

+ Input Upah Aneka

Jumlah Record: 6
Jumlah Halaman: 1

Reset Cetak

No	NIK	Nama	Bagian	Tgl Peristiwa	Informasi	Nilai	Rekening	Cek	Persetujuan	Opsi
1	28770608	BUDI SUSANTO	PAINTING LINE 1 A	2018-11-06	KELAHIRAN ANAK KE 1	Rp.408.800,-	2880102438189			Proses Hapus
2	28770608	BUDI SUSANTO	PAINTING LINE 1 A	2018-09-03	KELAHIRAN ANAK KE 3	Rp.408.800,-	2880102438189		OK	Proses Hapus
3	28831008	ALFIN ARMADANI RAHAR	SPV	2018-09-08	KELAHIRAN ANAK KE 1	Rp.408.800,-	2880104818187		OK	Proses Hapus
4	42381010	HERU SANTOSO	PAINTING LINE 1 A	2018-09-06	KELAHIRAN ANAK KE 1	Rp.408.800,-	8870100130122		OK	Proses Hapus
5	50480712	MUHAMAD ANBAR	SIA RESIN KRW 2A	2018-09-03	KELAHIRAN ANAK KE 3	Rp.408.800,-	5170108073113		OK	Proses Hapus
6	78320917	AGUS ZUDOVANTO	QA A	2018-03-10	PERNIKAHAN PERTAMA	Rp.850.000,-	2880130437185		OK	Proses Hapus
Total Transaksi							Rp 2.693.000,-			

1

Figure 10 Menu Various Wage Input Dispay

Kacamata

+ Input Kaca Mata

Jumlah Record: 3
Jumlah Halaman: 1

Reset Cetak

No	NIK	Nama	Bagian	Tgl Kwitansi	Informasi	Nilai Frame	Nilai Lensa	Total	Rekening	Opsi
1	0070490	RINWAN DARIMANTO	DIR	2018-10-11	Frame Biasa + Lensa	Rp.400.000,-	Rp.450.000	Rp.850.000	1860001287020	Hapus
2	68220816	RIDIVAN	STAFF GA	2018-10-08	Frame Biasa + Lensa	Rp.400.000,-	Rp.450.000	Rp.850.000	0450101681182	Hapus
3	10221100	SAPRIADI	PC LOG W/H B	2018-10-23	Frame Biasa + Lensa	Rp.200.000,-	Rp.300.000	Rp.500.000	2880107281183	Hapus
Total Transaksi							Rp 2.200.000,-			

1

Figure 11 Eyewear Input Menu Display

Data Kacamata

Jumlah Record: 2
Jumlah Halaman: 1

Reset Export

Cari nama di sini ...

No	NIK	Nama	Bagian	Status	Tgl Kwitansi	Informasi	Nilai Frame	Nilai Lensa	Rek	Hapus
1	10221100	SAPRIADI	PC LOG.WIH B	PERMANEN	2018-10-23	Frame Biasa + Lensa	Rp.200.000,-	Rp.300.000,-	2880107281183	Hapus
2	0080498	SUDARNO	PC TRANSPORTASI B	PERMANEN	2018-11-20	Frame Biasa + Lensa	Rp.300.000,-	Rp.400.000,-	2880100078181	Hapus

Figure 12 Eyewear Data Menu Display

Simpati Besuk

+ Input Simpati Besuk

Jumlah Record: 1
Jumlah Halaman: 1

Reset Cetak

No	NIK	Nama	Bagian	Diagnosa	Jenis Rawat	Tgl Masuk	Tgl Keluar	Nilai	Rekening	Opsi
1	0700598	SUPARNO	SAFETY HEALTH & ENVIRONMENT	DEMAM	OPNAME	2018-10-06	2018-10-13	Rp.180.000,-	2880100494188	Hapus

Total Transaksi: Rp.180.000,-

Figure 13 Sympathy Input Menu Display

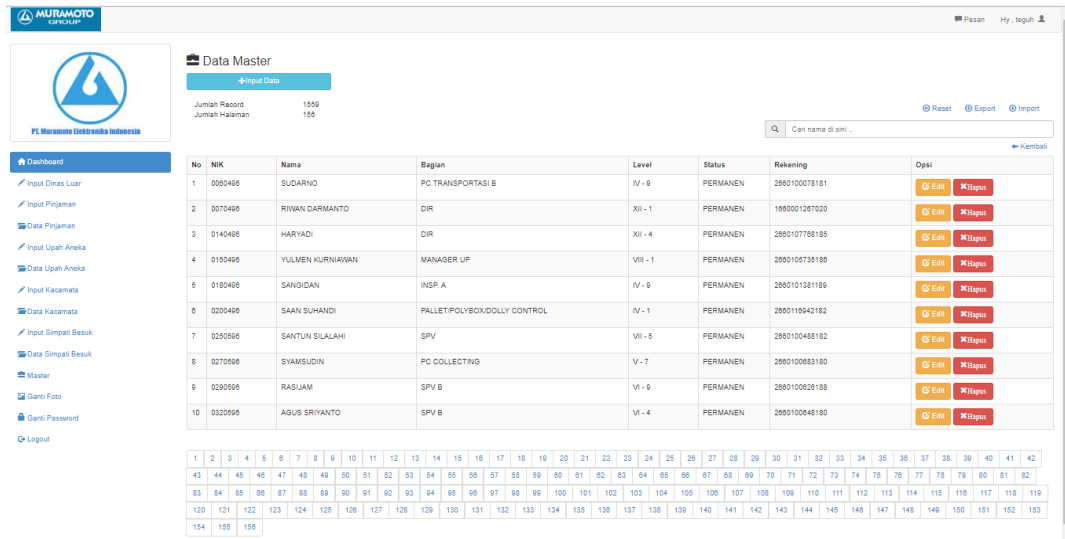


Figure 14 Menu Data Master Display

Testing

In testing this web-based incidental employee transaction system, it uses the black-box method where this method emphasizes testing the functions of the system, as follows:

Table 1 Testing Table

NO	That function Tested	which is conducted	Results are Expected	Test result
1	input servevice function	Select the external service input menu and then select the external service input	the system will display the input form and save the external service data	success
2	input loan function	select the loan input menu and then select the loan input	the system will display the input form and save the loan data	success
3				
4	input eye glass function	select the eye glass input menu and then select the glasses	the system will display the input form and save the glasses data	success
5	input sympathy function	select the input glasses menu then select the sympathy input	the system will display the input form and save the sympathy data for you	success
6	Service print function	select the external service input menu then select print	external service payment report will be printed	success
7	Loan print function	select the loan input menu then select print	loan repayment report will be printed	success
8	Print Various Wage function	select the various wage input menu and then select print	various wage payment reports will be printed	success
9	Eye glass print function	select the eye glass input menu and then select print	the payment report for the glasses will be printed	success
10	Sympathy print function	Select the menu of Besuk Sympathy Input and then select Print	the sympathy payment report will be printed	success

11	Delete various wage function	select various wage data menu and then select delete	the system will display the option ok or cancel and do the process of removing various wage data	success
12	Eye glass data delete function	select the various glasses data menu and then select delete	the system will display the option ok or cancel and make the process of deleting the glasses	success
13	Sympathy data delete function	select menu besuk sympathy data then select delete	the system will display the option ok or cancel and do the process of deleting the sympathy data	success
14	edit master function	select the master menu then select edit	the system will display the edit form and edit the master data	success
15	delete master function	select the master menu then select delete	the system will display the OK option or cancel and delete the master data process	success
16	input master function	select the master menu then select data input	the system will display the input form and save the master data	success

After the testing process is done, it can be seen that the system built runs according to the system flow that has been designed before, then the system also runs according to the user's request. The user interface and data scenario function properly

IV. CONCLUSIONS

After analyzing, designing, implementing, and testing the personnel information system at PT. Muramoto Elektronika Indonesia, the author draws the following conclusions:

- The design of the personnel information system is able to provide and facilitate the work process in the search and processing of employee data, both from the staffing unit and from the employee side in carrying out the employee submission process in submitting absentee deviations.
- With the existence of a staff information system can provide efficient value, especially in reducing the cost of paper use by relying on communication through e-mail notification.
- With the information system staffing can provide the right information to evaluate and make decisions in terms of staffing. In addition, the employee information system provides convenience to the leadership in planning related to employee needs.

REFERENCES

- Dennis, Alan, Barbara Haley Wixom, and Roberta M. Roth. "System Analysis And Design 5th edition", 2012.
- Nugroho, Andi, Retno Setya Wulandary. "Pengelolaan Presensi Dan Gaji Asisten Lab Berbasis Web Di Fasilkom Universitas Mercu Buana". *JURNAL ILMIAH FIFO Volume VIII, No. 1. 2016. ISSN : 2502-8332.*
- Panji Satria Yusmana, Fajar Masya, Siudirman. "Perancangan Sistem Administrasi Rehabilitasi Pada Panti Sosial Bina Daksa Budi Bhakti". *Jurnal Ilmiah Fifo Volume V/No 1/mei/2013 ISSN 2085 4315.*
- Masya, Fajar, Elvina, dan Raden Caturandy. "E-vocher Taksi Menentukan Jarak Terpendek dengan algoritma Djikstra Studi Kasus PT. MII ". *Jurnal fifo Volume VII No 1.2015. P-ISSN : 2085-4315. ISSN : 2502-8332.*
- Andi Nugraha, Nadhira Septafianti. "Aplikasi Monitoring Pengadaan Barang / Jasa Pada Direktorat Penilaian Keamanan Pangan Badan POM RI ". *Jurnal Ilmiah Teknik Informatika Universitas Mercu Buana Jakarta Volume 6 nomor 1 tahun 2017 ISSN:2089-5615.*
- Masya, Fajar, Elvina, dan Fitri Maria Simanjuntak. "Sistem Pelayanan Pengaduan Masyarakat Pada Divisi Humas Polri Berbasis Web". *Jurnal Seminar Nasional Aplikasi Teknologi Informasi. 2012. ISSN : 1907-5022.*
- Mursyidi. "Akutansi dasar". ghalia Indonesia.2010 ISBN : 9789794505823
- Pratama, I, P, A, K. "Sistem Informasi dan Implementasinya". Bandung :informatika. 2014.published
- Pastiarsa Made. "Menyusun Estimasi Biaya Proyek". Yogyakarta: Graha Ilmu.ISBN: 978-602-72848-6-9.
- Raharjo, Budi. "Membuat Database Menggunakan MySQL". Bandung: Informatika.ISBN: 978-602-8758-45-1. 2011